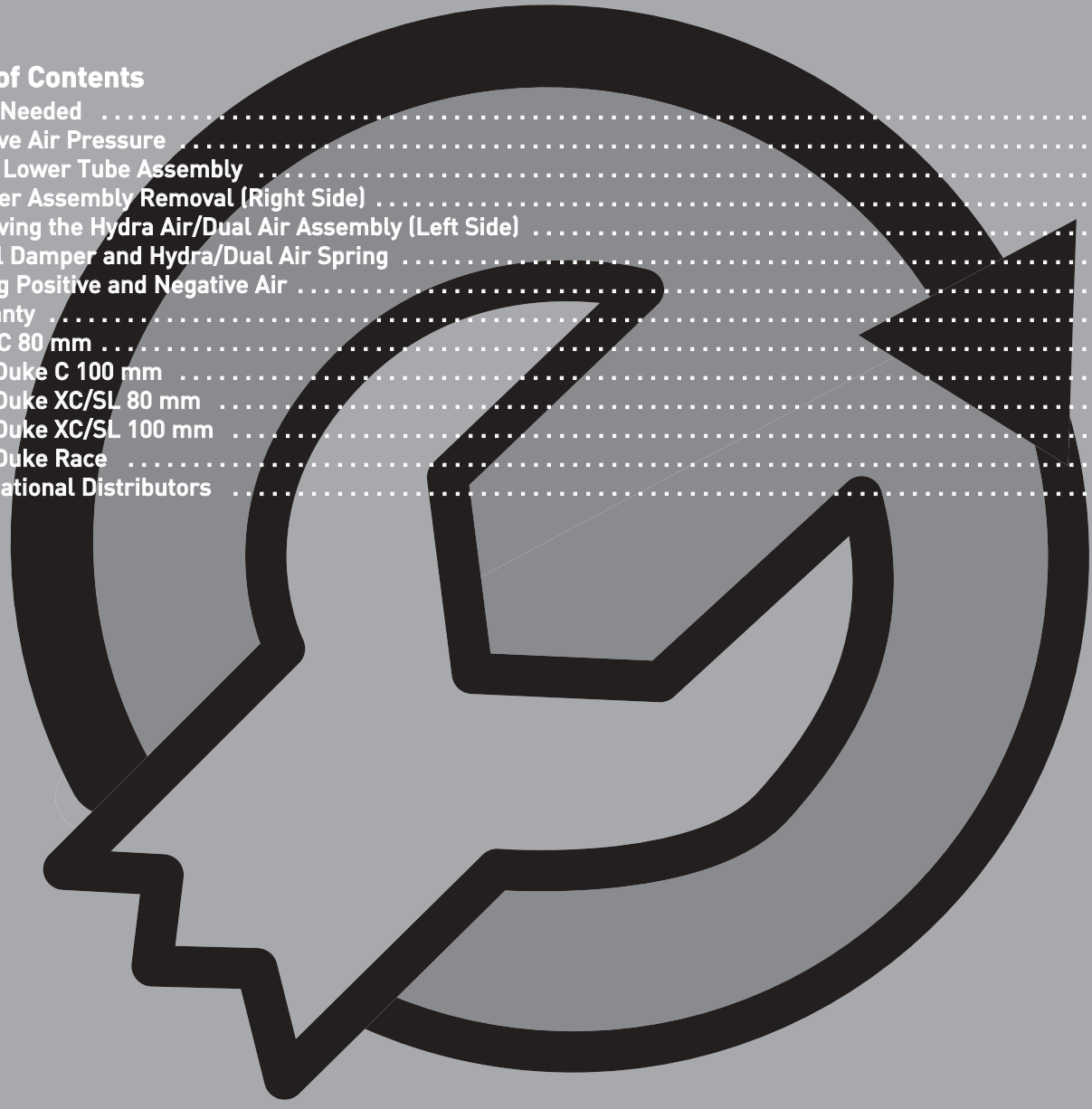




2002 DUKE SERVICE GUIDE

Table of Contents

Tools Needed	2
Remove Air Pressure	2
Clean Lower Tube Assembly	3
Damper Assembly Removal (Right Side)	4
Removing the Hydra Air/Dual Air Assembly (Left Side)	4
Install Damper and Hydra/Dual Air Spring	6
Adding Positive and Negative Air	7
Warranty	7
Duke C 80 mm	8
2002 Duke C 100 mm	9
2002 Duke XC/SL 80 mm	10
2002 Duke XC/SL 100 mm	11
2002 Duke Race	12
International Distributors	14



For exploded diagram and part number information, refer to the 2002 Spare Parts Catalog, P/N 950-006157-00. Contact your local distributor or visit the RockShox website at www.rockshox.com for ordering information.

Information contained in this publication is subject to change at anytime without prior notice. For the latest technical information, visit our website at www.rockshox.com. Names used in this manual may be trademarks or registered trademarks of others.

TOOLS NEEDED

- 5 mm Hex Wrench
- 10 mm Socket
- Torque Wrench
- Plastic Face Mallet
- 24 mm 6-point Socket
- Small Blade Screwdriver
- Straight and Curved Snap Ring Pliers
- 12" long cylindrical rod
- RockShox 5 wt. Oil
- RockShox RedRum
- Safety Glasses
- Oil Pan

After every 50 hours of riding, or less depending on riding conditions and riding style, the following service should be performed. This service should be performed by a qualified mechanic, using proper tools.

NOTE: SERVICE ON YOUR FORK MAY BE PERFORMED WITH IT STILL INSTALLED ON YOUR BICYCLE. USE THE EXPLODED VIEWS AT THE END OF THIS GUIDE TO IDENTIFY AND REFERENCE PARTS.

REMOVE AIR PRESSURE

1. Remove air valve covers from the negative (Race) and positive air chambers (fig. 1a). Depress schrader valve on the negative air chamber (Race) to remove air pressure and then repeat it on the positive air chamber (fig 1b).



REMOVE LOWER TUBE ASSEMBLY

2. Using a 24 mm socket, remove the top caps (fig. 2). Part numbers 110-006345-00 or 110-006346-00).



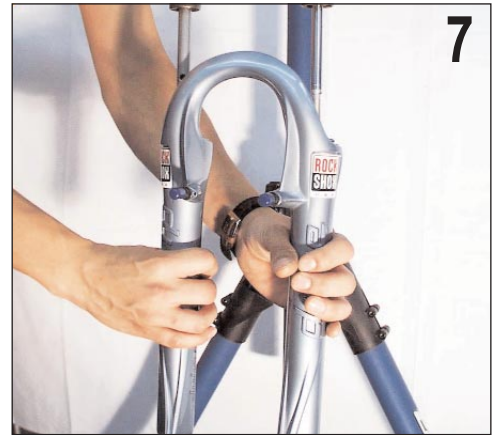
3. Gently pull downward to remove adjuster knob (110-004960-00) from the right shaft bolt (XC, SL and Race). See figure 3.



4. Loosen shaft bolt(s) and nut (Race) (110-005651-00) five turns (fig. 4) and tap firmly with a plastic faced mallet to separate the shafts from the lower tubes.
5. Keep a bucket below the fork to catch the oil. Inspect the condition of removed oil. If the oil is opaque and/or milky (water contamination), the lower tube assembly should be cleaned.
6. Remove shaft bolt(s) and nut completely.



7. Carefully slide lower tube assembly off of the upper tubes (fig. 7). Use the bucket to catch the excess oil.



NOTE: CYCLE THE DAMPER SHAFT IN THE UPPER TUBE TO ENSURE ALL OIL IS REMOVED.

CLEAN LOWER TUBE ASSEMBLY

8. Apply biodegradable solvent (Simple Green, Pedros, or isopropyl alcohol) to a clean rag and use a long cylindrical rod or screwdriver to clean the lower tube internals. Dry thoroughly.



REMOVING THE HYDRA AIR/DUAL AIR ASSEMBLY (LEFT SIDE)

HINT: RIGHT AND LEFT SIDE IS DETERMINED FROM THE RIDER'S PERSPECTIVE.

9. Push the air shaft through the plastic shaft guide (exposing only the shaft threads). Slide a 10 mm socket over Hydra Air/Dual Air shaft and flat against white shaft guide. Press socket firmly against base plate and past snap ring fitting. This will provide enough clearance to remove lower snap ring. Using angled (curved) snap ring pliers, carefully remove the lower snap ring and shaft guide (110-006291-00) from the upper tubes (fig. 9).

NOTE: IF YOU HAVE A 100 MM DUKE C, XC OR SL, YOU MAY SKIP TO STEP 13.



10. Remove wave washer from the Hydra Air/Dual Air side by tipping the fork down to a 45-degree angle. The wave washer will slide down to expose the inner snap ring.



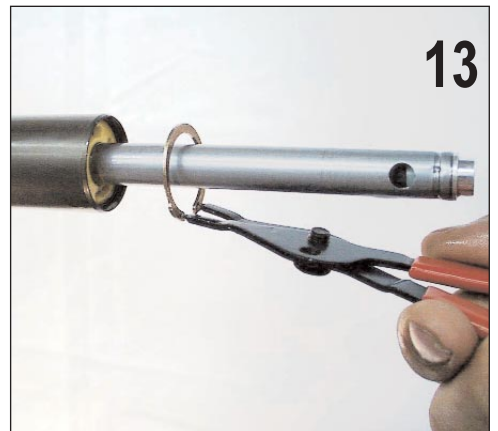
11. Using angled (curved) snap ring pliers, remove the inner upper tube snap ring from the Hydra Air/Dual Air side and remove the air spring assembly (**80 mm travel Duke only**).
12. Inspect air piston o-rings for wear and replace with the Duke Air/Damper80/100 O-ring Service Kit (110-006297-00). See the exploded diagrams at the end of this service guide for further information.

NOTE: DUKE RACE USES TWO PISTON O-RINGS AND DUKE C, XC AND SL USE ONE PISTON O-RING.



DAMPER ASSEMBLY REMOVAL (RIGHT SIDE)

13. Using straight-pin snap ring pliers, carefully remove the lower snap ring from the right upper tube (fig. 3).



14. Remove the yellow base plate from upper tube by pulling gently on the damper shaft.



15. Using a pick, remove washer (fig. 15).

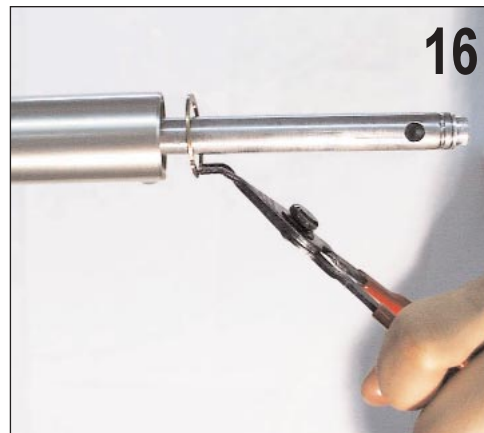
NOTE: IF YOU HAVE A 100 MM DUKE C, XC OR SL, YOU MAY SKIP TO STEP 17.



16. Duke C, XC, SL (80 mm) and Race Only: Using curved snap ring pliers, remove inner snap ring from the damper side (right side). See figure 16.

17. Gently pull the damper assembly from the upper tube (110-006290-80 or 110-006290-100).

18. Clean and inspect damper o-ring and replace if necessary.



O-RING SERVICE KITS:

Duke Air/Damper 80/100 O-ring Service Kit - 110-006297-00

Duke C, XC, SL 80 mm Damper O-ring Kit - 110-006461-10 or 110-006461-50

Duke C, XC, SL 100 mm and Psylo XC, C Damper O-ring Kit - 110-006452-10 or 110-006452-50

19. Apply biodegradable solvent (Simple Green, Pedros, or isopropyl alcohol) to a clean rag and use a long cylindrical rod or screw driver to clean the upper tube internals. Dry thoroughly.

NOTE: USE CARE NOT TO SCRATCH THE INNER SURFACE OF THE TUBE.



20. Using RockShox RedRum, thoroughly lubricate the air piston o-ring. This will ensure long o-ring life, smooth stroke and less friction.



INSTALL DAMPER AND HYDRA/DUAL AIR SPRING

TIP: TO PROPERLY ORIENT AND INSTALL THE ASSEMBLIES, REFERENCE THE EXPLODED DIAGRAMS AT THE END OF THIS GUIDE.

21. Slide the Hydra Coil damper shaft assembly (110-006290-80 or 110-006290-100) (right leg) and Hydra Air/Dual Air assembly (110-006291-80 or 110-006291-100) (left leg) through the bottom of the upper tubes.

IMPORTANT: USE CARE NOT TO DAMAGE THE PISTON O-RING.

22. Install the inner snap ring (80 mm forks only). For Duke Race, ensure the inner snap ring is attached to the dual air shaft according to figure 22.
23. Install base valve/shaft guide and washer into the upper tube.
24. Re-install the lower snap ring with the sharpest side towards the end of the upper tube.
25. Install the lower onto the upper assembly. Stop when the lower bushing contacts the upper tubes.
26. Invert the fork and add 10 to 15 cc of RockShox 5 wt. oil into the Hydra Air side or Dual Air side (Race).
27. Inspect the nylon crush washers for wear or damage and replace if necessary.
28. **BEFORE** installing the hollow shaft bolt, insert the rebound adjuster knob into the damper and turn the rebound valve to the full clockwise position. Then remove the knob. **This prevents damage to the plastic rebound insert in the shaft.**
29. Install the hollow shaft bolt on the damper side and torque to 60 in-lb. Install the solid shaft bolt or nut on the Hydra Air/Dual Air side of the fork (left side). Torque to 60 in-lb.
30. Turn the fork right-side up. From the top of the upper tube, insert 125 cc of RockShox 5 wt. oil on the damper side for 80 mm forks and 140 cc for RockShox 5 wt. oil for 100 mm forks. Cycle the fork to circulate the oil through the damper.

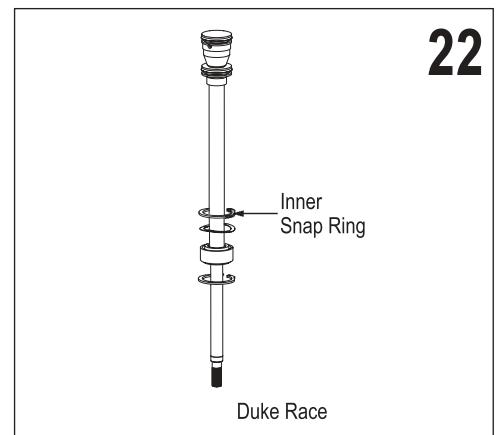
TUNING TIP #1: ADD UP TO 140 CC OF OIL TO INCREASE DAMPING PERFORMANCE AND INCREASE SPRING RATE AT THE END OF TRAVEL.

TUNING TIP #2: YOU MAY NEED TO USE A LIGHTER OR HEAVIER WEIGHT OIL TO ADJUST THE AMOUNT OF DAMPING.

31. Install the non-adjust top cap on the damper side and torque to 40 in-lb.
32. Add 3 cc of RedRum on top of the air piston. This will lubricate the air piston o-ring. Install the air top cap and torque to 40 in-lb.

TUNING TIP: YOU MAY INCREASE THE PROGRESSION OF YOUR SPRING RATE BY ADDING UP TO 10 CC OF REDRUM ON TOP OF THE AIR PISTON.

33. Install the rebound adjuster knob into the hollow shaft bolt for Duke XC, SL and Race.



ADDING POSITIVE AND NEGATIVE AIR

34. Add the desired positive air to the fork (all models). Then add desired negative air to the Duke Race.

POSITIVE AIR PRESSURE GUIDELINES

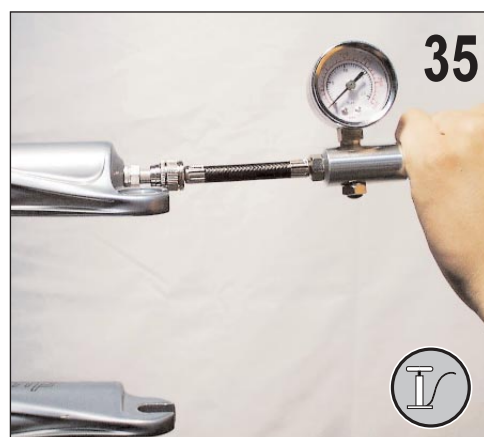
Rider Weight (lb)	Air Pressure
<140 (63 kg)	80-115 psi
140-160 (63-72 kg)	115-130 psi
160-180 (72-81 kg)	130-145 psi
180-200 (81-90 kg)	145-160 psi
>220 (99 kg)	180 psi

35. **Duke Race Only** : Add desired negative air.

NEGATIVE AIR PRESSURE GUIDELINES

Ride Weight (lb)	Air Pressure
<140 (63 kg)	60-115 psi
140-160 (63-72 kg)	95-130 psi
160-180 (72-81 kg)	110-145 psi
180-200 (81-90 kg)	125-160 psi
>220 (99 kg)	160-180 psi

TIP: FOR A LESS ACTIVE FORK (MINIMAL 'BOB' WHILE OUT OF THE SADDLE) INFLATE THE NEGATIVE CHAMBER WITH LOWER AIR PRESSURE. FOR A PLUSHER, MORE ACTIVE FORK, INCREASE THE NEGATIVE AIR PRESSURE BY 5-15PSI.



WARRANTY

RockShox, Inc. warrants its products for a period of one year from original date of purchase to be free from defects in materials or workmanship. Any RockShox product that is returned to the factory and is found by RockShox to be defective in materials or workmanship will be repaired or replaced at the option of RockShox, Inc. This warranty is the sole and exclusive remedy. RockShox shall not be held liable for any indirect, special, or consequential damages.

The warranty does not apply to products which have not been properly installed and adjusted according to RockShox installation instructions. The warranty does not cover any product that has been subject to misuse or whose serial number has been altered, defaced or removed. This warranty does not cover paint damage or modifications to the product. Proof of purchase is required.

WARRANTY REPAIR

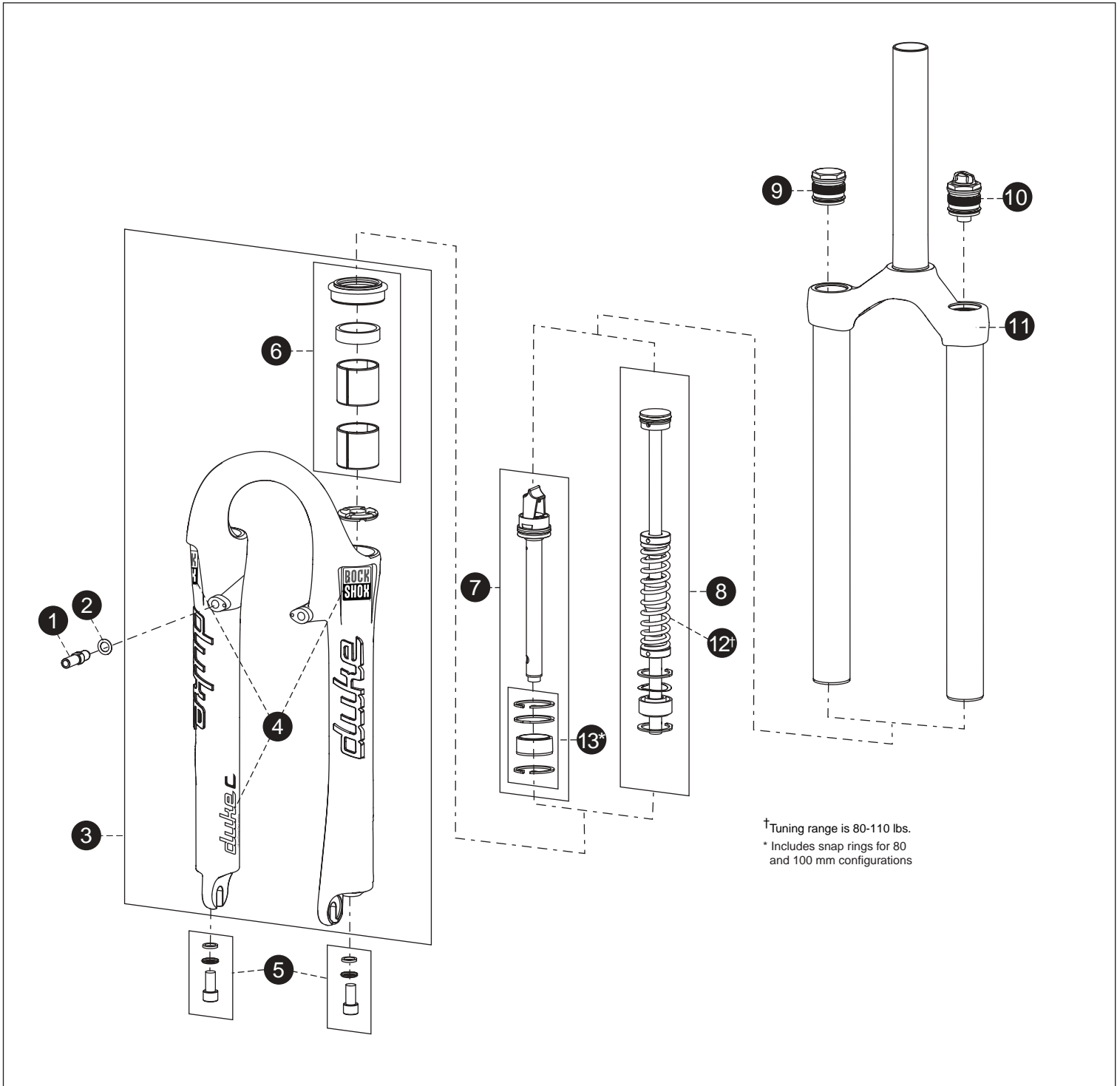
If for any reason it should be necessary to have warranty work done, return the product to the place of purchase. In the USA, Dealers should call for a Return Authorization number (RA#) prior to returning product.

Products returned for inspection must be sent freight prepaid and with proof of purchase to:

RockShox, Inc.
1610 Garden of the Gods
Colorado Spring, CO 80907

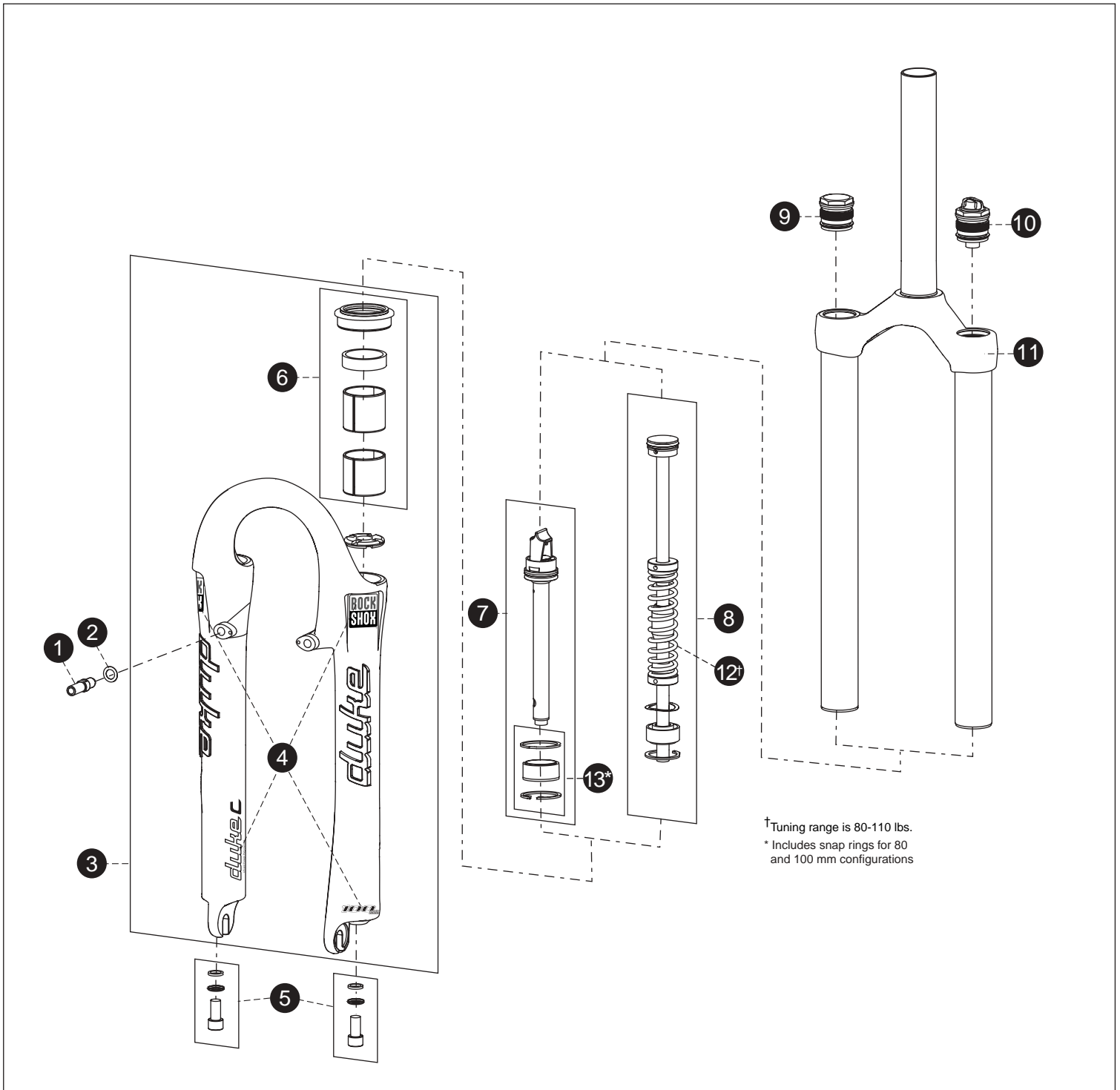
For more technical information, visit our website at www.rockshox.com. For toll-free technical support in the USA, call 1.800.677.7177.

Customers in countries other than the USA should contact their local dealer or distributor.

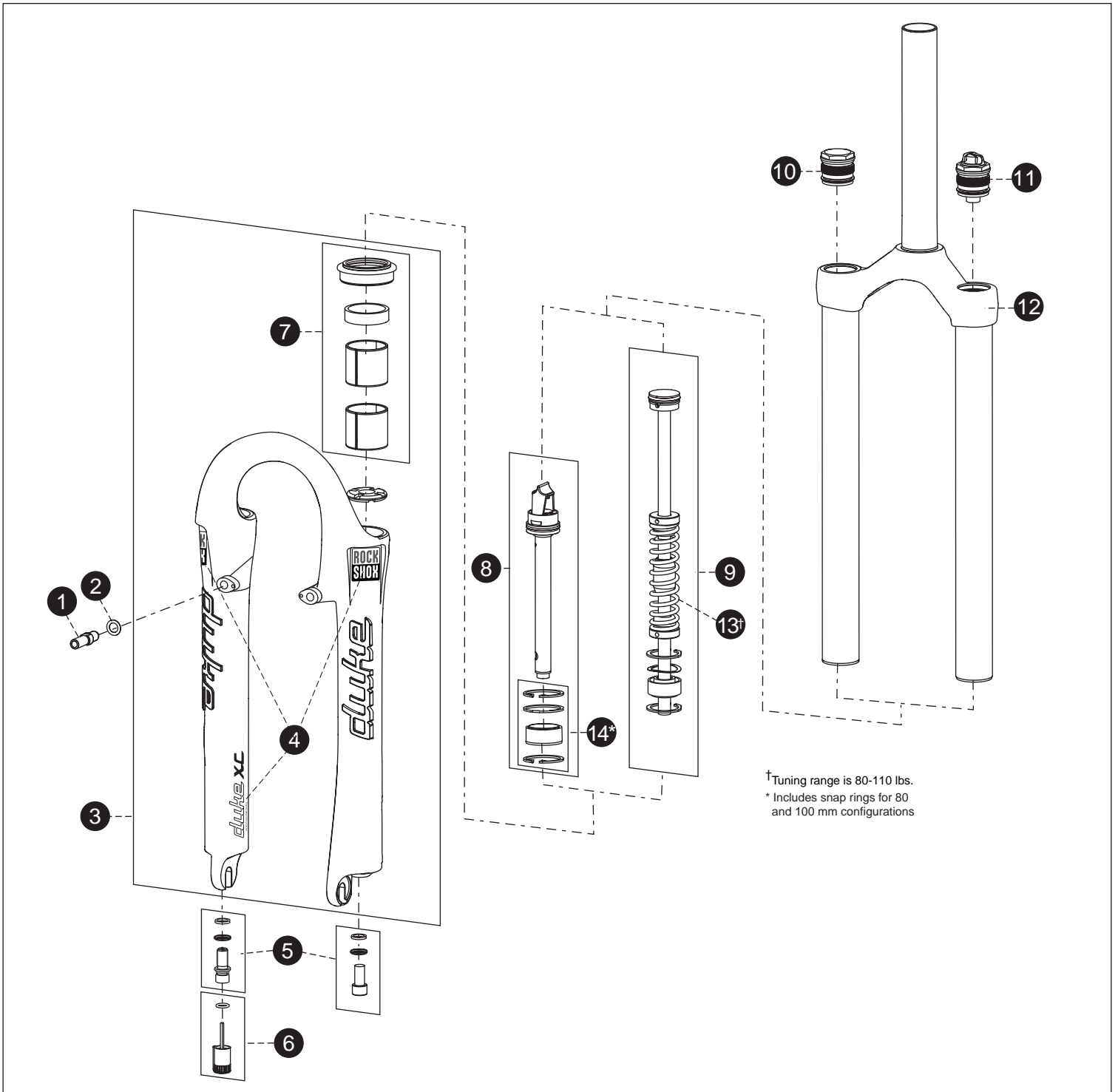


1	Brake Post	48131	10	02 Duke/Psylo RaceSchrader Air Top Cap, Blk	110-006209-00
2	Brake Post Washer	52261		02 Schrader Air Top Cap, Aluminum	110-006432-00
3	02 Duke LL Assembly (Pearl Silver)	110-006287-08	11	02 Duke C/XC 80 1-1/8 Thrdls Crn/StlStr/Up	110-006292-80
	02 Duke LL Assembly (Black)	110-006287-00		02 Duke C/XC 80 1-1/8 Thrdlss Crn/Al Str/Up	110-006293-80
	02 Duke LL Assembly (Red)	110-006287-02	12	Duke Soft Negative Spring	110-006443-00
4	02 Duke C Decal Kit	110-006288-00			
5	Hydra Air/Hydra Coil Ext. Hardware Kit	110-005651-00	Not Shown		
6	02 Duke Revive Kit	110-006289-00		02 Duke Air O-ring Service Kit	110-006297-00
7	02 Duke C Fixed Damper Assy, 80 mm	110-006336-80		(includes damper o-rings and piston o-rings for all Duke models)	
8	02 Duke 80 mm NegativeSpring Assembly	110-006291-80		Duke 80 mm Damper O-ring, Qty 10	110-006461-10
9	Non-Adjust Top Cap	110-006206-00		Duke 80 mm Damper O-ring, Qty 50	110-006461-50

2002 DUKE C 100 MM



1	Brake Post	48131	10	02 Duke/Psylo Race Schrader Air Top Cap, Blk	110-006209-00
2	Brake Post Washer	52261		02 Schrader Air Top Cap, Aluminum	110-006432-00
3	02 Duke LL Assembly (Pearl Silver)	110-006287-08	11	02 Duke 100 C/XC 1-1/8 Thrdls Cm/Stl Str/Up	110-006292-100
	02 Duke LL Assembly (Black)	110-006287-00		02 Duke 100 C/XC 1-1/8 Thrdlss Cm/Al Str/Up	110-006293-100
	02 Duke LL Assembly (Red)	110-006287-02	12	Duke Soft Negative Spring	110-006443-00
4	02 Duke C Decal Kit	110-006288-00			
5	Hydra Air/Hydra Coil Ext. Hardware Kit	110-005651-00			
6	02 Duke Revive Kit	110-006289-00			
7	02 Duke C Fixed Damper Assy, 100 mm	110-006336-100			
8	02 Duke 100 mm Negative Spring Assembly	110-006291-100			
9	Non-Adjust Top Cap	110-006206-00			
			Not Shown		
			02 Duke Air O-ring Service Kit	110-006297-00	
			(includes damper o-rings and piston o-rings for all Duke models)		
			Duke 100 mm Damper O-ring, Qty 10	110-006452-10	
			Duke 100 mm Damper O-ring, Qty 50	110-006452-50	



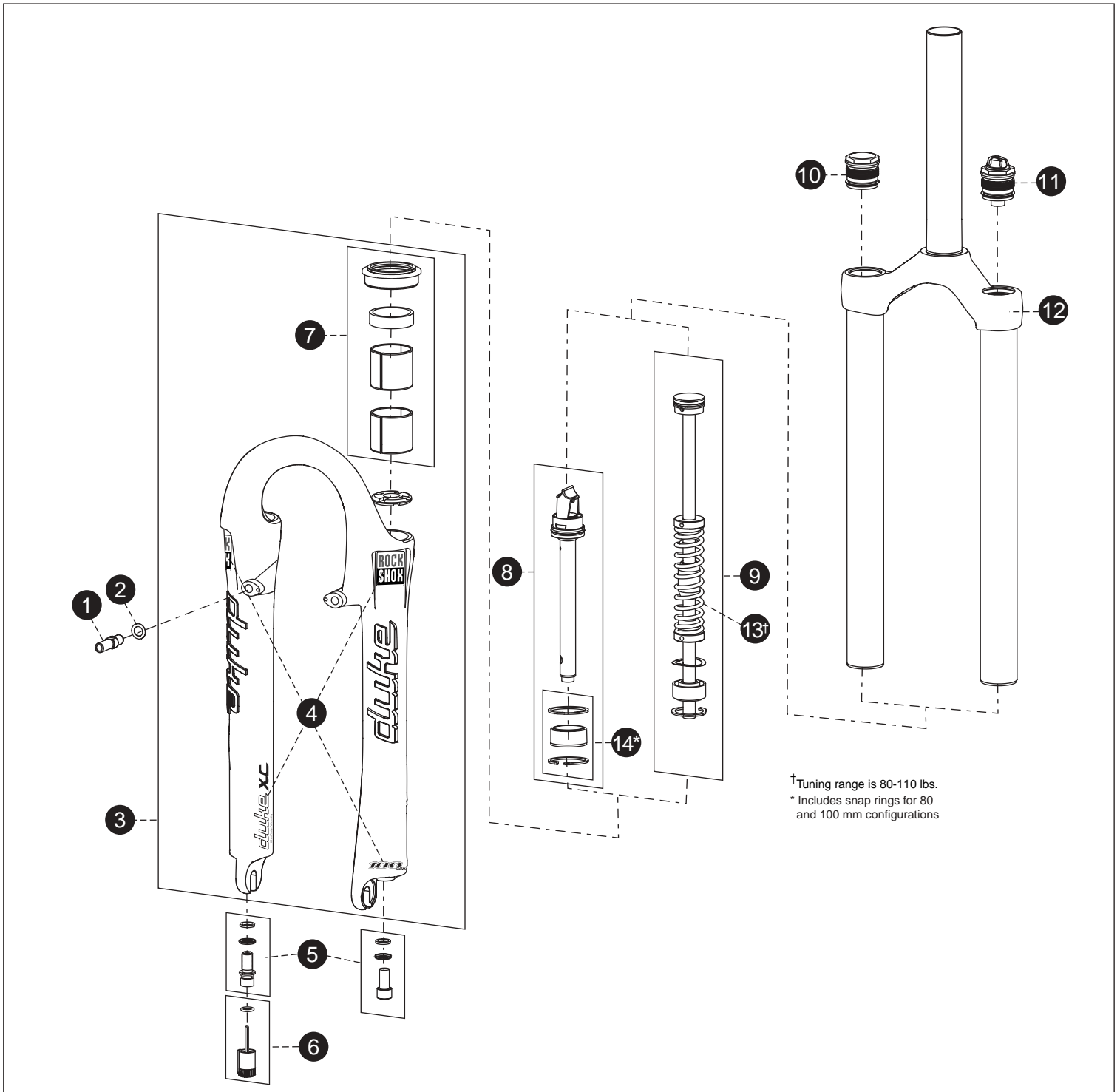
† Tuning range is 80-110 lbs.
 * Includes snap rings for 80 and 100 mm configurations

1	Brake Post	48131	7	02 Duke Revive Kit	110-006289-00
2	Brake Post Washer	52261	8	02 Duke 80 mm Damper Assembly	110-006290-80
3	02 Duke LL Assembly (Pearl Silver)	110-006287-08	9	02 Duke 80 mm Negative Spring Assembly	110-006291-80
	02 Duke LL Assembly (Black)	110-006287-00	10	Non-Adjust Top Cap	110-006206-00
	02 Duke LL Assembly (Red)	110-006287-02	11	02 Duke/Psylo Race Schrader Air Top Cap, Blk	110-006209-00
	02 Duke LL Assembly (Pearl White)	110-006287-19		02 Schrader Air Top Cap, Aluminum	110-006432-00
	02 Duke LL Assembly (Indigo)	110-006287-21	12	02 Duke C/XC 80 1-1/8 Thrds Crn/Stl Str/Up	110-006292-80
4	02 Duke XC Decal Kit	110-006294-00		02 Duke C/XC 80 1-1/8 Thrds Crn/Alm Str/Up	110-006293-80
	02 Duke SL Decal Kit	110-006295-00		02 Duke SL 80 1-1/8 Thrds Blk Crn/Alm Str/Up	110-006296-80
5	Hydra Air/Hydra Coil Ext. Hardware Kit	110-005651-00	13	Duke Soft Negative Spring	110-006443-00
6	External Rebound Adjuster Knob (w/o-ring)	110-004960-00			

Not Shown

02 Duke Air O-ring Service Kit	110-006297-00
(includes damper o-rings and piston o-rings for all Duke models)	
Duke 80 mm Damper O-ring, Qty 10	110-006461-10
Duke 80 mm Damper O-ring, Qty 50	110-006461-50

2002 DUKE XC/SL 100 MM

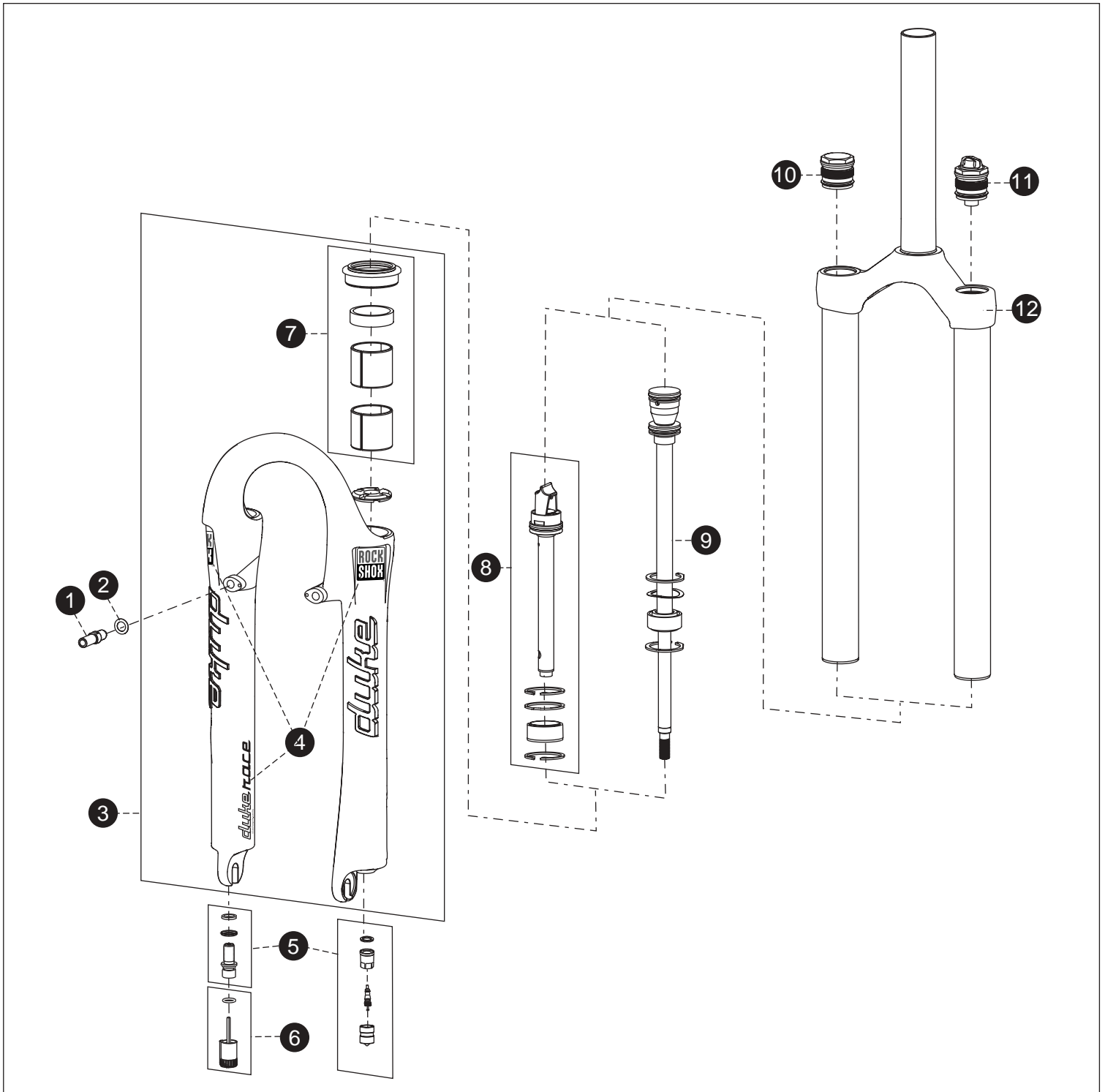


† Tuning range is 80-110 lbs.
* Includes snap rings for 80 and 100 mm configurations

1	Brake Post	48131	7	02 Duke Revive Kit	110-006289-00
2	Brake Post Washer	52261	8	02 Duke 100 mm Damper Assembly	110-006290-100
3	02 Duke LL Assembly (Pearl Silver)	110-006287-08	9	02 Duke 100 mm Negative Spring Assy	110-006291-100
	02 Duke LL Assembly (Black)	110-006287-00	10	Non-Adjust Top Cap	110-006206-00
	02 Duke LL Assembly (Red)	110-006287-02	11	02 Duke/Psylo Race Schrader Air Top Cap, Blk	110-006209-00
	02 Duke LL Assembly (Pearl White)	110-006287-19		02 Schrader Air Top Cap, Aluminum	110-006432-00
	02 Duke LL Assembly (Indigo)	110-006287-21	12	02 Duke C/XC 100 1-1/8 Thrdls Cm/Stl Str/Up	110-006292-100
4	02 Duke XC Decal Kit	110-006294-00		02 Duke C/XC 100 1-1/8 Thrdls Cm/Al Str/Up	110-006293-100
	02 Duke SL Decal Kit	110-006295-00		02 Duke SL 100 1-1/8 Thrdls Blk Cm/AlStr/Up	110-006296-100
5	Hydra Air/Hydra Coil Ext. Hardware Kit	110-005651-00	13	Duke Soft Negative Spring	110-006443-00
6	External Rebound Adjuster Knob (w/o-ring)	110-004960-00			

Not Shown

02 Duke Air O-ring Service Kit	110-006297-00
(includes damper o-rings and piston o-rings for all Duke models)	
Duke 100 mm Damper O-ring, Qty 10	110-006452-10
Duke 100 mm Damper O-ring, Qty 50	110-006452-50



- | | | | | | |
|----|---|---------------|------------------|--|---------------|
| 1 | Brake Post | 48131 | 11 | 02 Duke/Psylo Race Schrader Air Top Cap, Blk | 110-006209-00 |
| 2 | Brake Post Washer | 52261 | | 02 Schrader Air Top Cap, Aluminum | 110-006432-00 |
| 3 | 02 Duke LL Assembly (Electric Ice Blue) | 110-006287-15 | 12 | 02 Duke Race 80 1-1/8 Thrds Elec. Ice Blu CSU | 110-006300-15 |
| | 02 Duke LL Assembly (Electric Yellow) | 110-006287-13 | | 02 Duke Race 80 1-1/8 Thrds Elec. Yel CSU | 110-006300-13 |
| 4 | 02 Duke Race Decal Kit | 110-006394-00 | | | |
| 5 | Dual Air Ext. Hardware Kit | 110-005650-00 | Not Shown | | |
| 6 | External Rebound Adjuster Knob (w/o-ring) | 110-004960-00 | | 02 Duke Air O-ring Service Kit | 110-006297-00 |
| 7 | 02 Duke Revive Kit | 110-006289-00 | | (includes damper o-rings and piston o-rings for all Duke models) | |
| 8 | 02 Duke 80 mm Damper Assembly | 110-006290-80 | | Duke 80 mm Damper O-ring, Qty 10 | 110-006461-10 |
| 9 | 02 Duke Race Dual Air Spring Assembly | 110-006291-80 | | Duke 80 mm Damper O-ring, Qty 50 | 110-006461-50 |
| 10 | Non-Adjust Top Cap | 110-006206-00 | | | |



INTERNATIONAL DISTRIBUTORS

Argentina

Broni S.A.
Phone: 54 11 4292 3000
FAX: 54 11 4292 4453
J.J. PASO 1260, (1832) LOMAS DE ZAMORA,
BUENOS AIRES

Australia

Steve Cramer Products
Phone: 61 3 9587 1466
FAX: 61 3 9587 2018
39 INDUSTRIAL DRIVE BRAESIDE, VICTORIA
3192

Austria

Barisitz-Austria
Phone: 43 0 5223 46444
FAX: 43 0 5223 46444-14
A-6060 Mils
Gewerbepark 12

Belgium

Vertex Cycle Systems BV
Phone: 31 23 57 18184
FAX: 31 23 57 18606
FLEMINGSTRAAT 100A, 2041 VL ZANDVOORT
HOLLAND

Bulgaria

Rog 2000
Phone: 3592 44 7042
FAX: 3592 943 3445
18, IVAN ASSEN STR.
1000 SOFIA

Brazil

Pedal Power
Phone: 55 11 3845 6997
FAX: 55 11 3845 6377
R. GOMES De CARVALHO 541
SAO PAULO SO
04547002

Canada

Cycles Lambert
Phone: 800 463-4452 (Quebec)
FAX: 800 461 1685
100 Rue des Riveurs
LEVIS, QUEBEC
G6V 9G3

Chile

Bicicletas Belda Limitada
Phone: 56 32 881799
FAX: 56 32 978799
14 NORTE 1001
VINA DEL MAR

Costa Rica

Inversiones Y Sistemas Garvi
Phone: 506 296 3383
FAX: 506 289 7013
P.O. BOX 4805-1000, SAN JOSE

Croatia

Ciklo-Centar
Phone: 385 1 234 22 24
FAX: 385 1 234 34 22
JURJA VES 30A
10000 ZAGREB

Czech Republic

Vanek Praha
Phone: 42 0 312 698 1889
FAX: 42 0 312 698 025
CERRENY UJEZD 185, UNHOST, 27351

Denmark

Duell A/S
Phone: 45 86 36 7800
FAX: 45 86 36 7377
MOLLERUPVEJ 3, TAASTRUP, 8410 RONDE

Ecuador

Bici Sport
Phone: 5932 248737
FAX: 5932 253691
AV DE DICIEMBRE 6327, ENTRE LOUVRE Y
TOMAS DE, BERLANGA.LOCAL #3, QUITO

Estonia

Hawaii Express
Phone: 372 6 398 508
FAX: 372 6 398 566
REGATI 1, 5K-102, TALLINN, 11911, Estonia
Or
Estonian Unidream
Phone: 372 636 7470
Fax: 372 636 7470
Paavli 2A, Tallinn
EE0004, Estonia

Finland

Mr. Cool OY
Phone: 358 9 3250817
FAX: 358 9 3250609
LINNAVUORENTIE 28, HELSINKI, 00950

France

Royal Velo France
Phone: 33 325 433 730
Fax: 33 325 43 95 95
4 RUE DES AZALEES, P.A. SUD-CHAMPANGE
ST THIBAUT, 10800

Germany

Sport Import GmbH
Phone: 49 44 05 9280 0
FAX: 49 44 05 9280 49
INDUSTRIESTRASSE 41 B, EDEWECHT, 26188

Greece

Gatsoulis Stefanos Imports
Phone: 30 12512 779
FAX: 30 12533 960
8 THESSALONIKIS STREET, NEW FILADELFIA,
ATHENS, T.T. 14342

Guatemala

BYS Importaciones S.A.
Phone: 502 366 7709
FAX: 502 363 3918
18 CALLE 7-48, ZONA 10, GUATEMALA

Holland

Vertex Cycle Systems BV
Phone: 31 23 57 18184
FAX: 31 23 57 18606
FLEMINGSTRAAT 100A, 2041 VL ZANDVOORT
HOLLAND

Hong Kong

Flying Ball Bicycle Company
Phone: 852 23813661
FAX: 852 23974406
201 TUNG CHOI ST. G/F, MONGKOK KOWLOON

Hungary

Prokero Ltd Co.
Phone: 361 331 3184
FAX: 361 331 3184
KALMAN IMRE UTCA 23, BUDAPEST, 1054

Iceland

Orninn Hjól Ltd
Phone: 354 588 9892
FAX: 354 588 9896
SKEIFAN 11, P.O. BOX 8036, REYKJAVIK

Ireland

Madison
Phone: 44 20 8385 3385
Fax: 44 20 8385 3443
BUCKINGHAME HOUSE EAST, THE BROADWAY
STANMORE, MIDDLESEX HA7 4EA
UNITED KINGDOM

Israel

Becidan Cycles
Phone: 972 9 954 9165
FAX: 972 9 954 9165
92 SOKOLOV HERZELYA

Italy

Motorquality
Phone: 39 02 24 951 1
FAX: 39 02 24 951 228
20099 SESTO S. GIOVANNI, (MI) I VIA VENEZIA,
(ANG. VIA CARDUCCI), MILANO

Japan

Yoshigai Corporation
Phone: 81 6 4309 2530
FAX: 81 6 4309 2532
74-3 Nagata-Higashi,
Higashi-Osaka, Japan

Korea

OD Bike Inc.
Phone: 82 2 474 0818
Fax: 82 2 474 0656
3F 379-20 SUNGNAE-DONG, KANGDONG-KU,
SEOUL, 134-030

Latvia

Veloserviss
Phone: 371 750 1292
Fax: 371 750 1298
1/1 HAPSALAS ST., RIGA, LV-1005

Luxembourg

Vertex Cycle Systems BV
Phone: 31 23 57 18184
FAX: 31 23 57 18606
FLEMINGSTRAAT 100A, 2041 VL ZANDVOORT
HOLLAND

Malyasia

Gin Huat Cycle Trading
Phone: 603 6189 1663
FAX: 603 6189 1662
NO. 8, JALAN INDUSTRI BATU CAVES ½
TAMAN PERINDUSTRIAN BATU CAVES
68100 BATU CAVES
SELANGOR DARUL EHSAN

Mexico

Tekno Bike & Outdoor Prod.
Phone: 52 8 343 1550
FAX : 52 8 343 1275
Porfirio Diaz #469
Col Centro CP 6400
Monterey, NL Mexico

New Zealand

W.H. Whorrall & Co. Ltd.
Phone: 64 9 63 6 06 41
FAX: 64 9 63 6 06 31
43 FELIX ST
PENROSE, AUCKLAND
NEW ZEALAND

Norway

Hallman Sports
Phone: 46 18 56 16 00
FAX: 46 18 50 03 22
HALLNASGATAN 8, S-75228 UPPSALA, SWEDEN

Panama

Distribuidora Rali S.A.
Phone: 507 220-3844
FAX: 507 220-5303
VIA ESPANS EDIFICA CARCEP, P.O. BOX 87-0852,
PANAMA 7

Peru

Rojo Sports
Phone: 511 447 0838
FAX: 511 447 0838
AV. REPUBLICA DE, PANAMA 6513, LIMA 33

Poland

Giant Polska S.P. ZOO
Phone: 48 22 645 14 34
FAX: 48 22 645 14 36
AL NIEPODLEGLOSCI 221-4, 02-087 WARSZAWA

Portugal

Bicimax
Phone: 351 244 553276
FAX: 351 244 553187
APARTADO 34, 2431 MARINHA GRANDE

Russia

Sportex
Phone: 7095 288 4524
FAX: 7095 288 6888
KUDRINSKAYA PL., 1,, P.O.BOX 33, MOSCOW,
123242

St. Maarten

Tri-Sport International
Phone: 5995 43462
FAX: 5995 43928
8 AIRPORT BOULEVARD, SIMPSON BAY,
NAMIBIA

Singapore

Trekology Bikes 3
Phone: 65 466 2673
FAX: 65 466 7610
24 HOLLAND GROVE ROAD, SINGAPORE, 1545

Slovak Republic

Paul Lange Oslany
Phone: 42 1 862 5492 344
FAX: 42 1 862 5492 350
MIEROVA 854/37 OSLANY, 97247 SLOVAKIA

Slovenia

Proloco Trade
Phone: 386 64 380 200
FAX: 386 64 380 2022
ENOTA KRANJ, BRITOF 96A, 4000 KRANJ

South Africa

Coolheat (SA) (PTY) Ltd.
Phone: 27 11 807 5282
FAX: 27 11 807 2998
3 RUARGH STREET, PARK CENTRAL, P O BOX
740, JOHANNESBURG 2001

Spain

K. Motor Dealer S.L.
Phone: 34 9 1 637 70 97
FAX: 34 9 1 637 72 64
PARQUE INDUSTRIAL, EUROPOLIS EDIFICO
BRUSELA, BLOQUE 4, NAVE 1, LAS ROZAS
(MADRID), N/A, 28230

Sweden

Hallman Sports
Phone: 46 18 56 16 00
FAX: 46 18 50 03 22
HALLNASGATAN 8, S-75228 UPPSALA

Switzerland

Cilo Bike Service SA
Phone: 41 21 641 63 30
FAX: 41 21 641 63 82
CH. DE L'ORIO 30 A, CASE POSTALE 64, CH-
1032 ROMANEL S. LAUSANNE

Taiwan

Biketech Co. Ltd.
Phone: 886 22 694 5806
FAX: 886 22 694 6133
NO. 12 FU TEH ROAD, 266 LANE, 37 ALLEY
HSICHIH, TAIPEI HSIEN, TAIWAN, R.O.C.

Thailand

Probike Co. Ltd.
Phone: 662 254 1077
FAX: 662 254 1078
237/2 SARASIN ROAD, LUMPINNE, PATUMWAN,
BANGKOK, 10330

Turkey

EBSAT
Phone: 90 212 514 0525
FAX: 90 212 519 4846
EBSAT EMEK BISIKLET, EBUSSUUD CAD NO.67,
34410 SIRKECI, ISTANBUL, 34410

United Kingdom

Madison
Phone: 44 20 8385 3385
Fax: 44 20 8385 3443
BUCKINGHAME HOUSE EAST, THE BROADWAY
STANMORE, MIDDLESEX HA7 4EA
UNITED KINGDOM

Venezuela

Bike Sports
Phone 582 751 9709
FAX: 582 753 5071
CENTRO COMERCIAL IBARRA, PLANTA BAJA,
LOCAL 3-A CALLE GARCILAZO, COLINAS DE
BELLO, 0, CARACAS